



WESPECIALTY

# WE CARGO®

## SPECIE

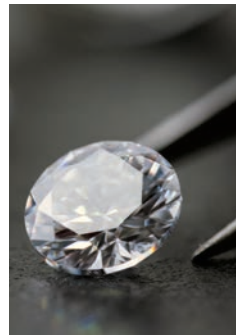
WESPECIALTY is a Managing General Agency (MGA) based in Paris and Rouen. Through its specialty insurance-focused offering, the Group caters particularly to companies with international operations or those requiring bespoke solutions: industrial and commercial companies, commodity trading companies, transporters, logistics providers, and ship-owners.

### POSITIONING

Lead and co-insurance position in primary, excess of loss lines and reinsurance

### WESPECIALTY'S ADDED VALUE

- Tailor-made solutions for specialty insurance
- Recognised experts who embody their skills
- Instant access to more than 20 insurance companies
- An agile company that stands out for its proximity, responsiveness and transparency



© iStockphoto

### OFFER

- Sectors: watch makers, jewellers, goldsmiths and silversmiths, financial institutions, fiduciary printers, professional carriers and warehouses keepers of valuables
- Insurable interests: jewellery, watches, payment titles and vouchers, precious metals and objects
- Geographical scope: worldwide
- Covered Risks: "all-risk", including theft both in and out of a safe, transport, promotional events, employee dishonesty, climactic events and terrorism
- Coverage extensions: unexplainable disappearances/simple thefts, breakages, transport and temporary storage costs

**UNDERWRITING CAPACITY:**  
**€150,000,000**

REPRESENTED INSURERS: APOLLO, HDI GLOBAL SPECIALTY SE, LLOYD'S

FIND US : WESPECIALTY, 9 rue Rougemont 75009 Paris | COGEAS and Assurances Service Fluvial, Espace leader - Rue Gustave Eiffel - 76230 Bois-Guillaume | [www.wespecialty.com](http://www.wespecialty.com)



Christèle PAUTET  
Senior Underwriter  
+33 (0)6 86 16 01 56  
[christele.pautet@wespecialty.com](mailto:christele.pautet@wespecialty.com)



Michele ABBRACCIAMENTO  
Group Chief Underwriting Officer  
+33 (0)6 82 33 66 92  
[michele.abbracciamento@wespecialty.com](mailto:michele.abbracciamento@wespecialty.com)

This document provides a brief description of our insurance products. The exact content of the guarantees we provide and as defining our contractual commitments is included in the text of the insurance policies subscribed to with WESPECIALTY or its subsidiaries. WESPECIALTY, 9 rue Rougemont 75009 Paris. WESPECIALTY is a Simplified Joint Stock Company, registered in France under the SIREN number 820 109 106, APE: 6622Z. WESPECIALTY is registered at ORIAS under the number 16003036. Compagnie de Gestion et d'Assurances, at Espace Leader - Rue Gustave Eiffel - BP 861 - 76235 Bois-Guillaume Cedex. Compagnie de Gestion et d'Assurances is a Simplified Joint Stock Company registered in France under the SIREN number 640 501 219, APE: 6622Z. Compagnie de Gestion et d'Assurances is registered at ORIAS under the number 07027322. Assurances Service Fluvial, Espace Leader - Rue Gustave Eiffel - BP 861 - 76235 Bois-Guillaume Cedex is a Simplified Joint Stock Company registered in France under the SIREN number 498 083 674, APE: 6629Z. Assurances Service Fluvial is registered at ORIAS under the number 07030430.